

OVERVIEW

WrapShield RS Rain Screen is a mechanically attached high performance Water Resistive Barrier (WRB) and Air Barrier (AB) with a built-in polypropylene drainage matrix material, available in three different depths: 3mm, 7mm and 11mm.

AIR BARRIER INSTALLATION

Air barrier installation requires all seams, joints, overlaps and penetrations to be sealed for complete air barrier continuity.

BEST PRACTICES OVERVIEW

- Always install WrapShield RS Rain Screen horizontally, in a “weatherboard or shingle fashion” with the upper courses lapped on top of the courses below. Horizontal overlaps must be 6” in order to properly seal the integrated tape joint; dotted line provided.
- Building layout should be planned prior to installation to minimize waste and ensure all interfaces and penetrations are identified and correctly detailed to protect against water and air infiltration.
- WrapShield RS Rain Screen must be correctly shingled with all openings, penetrations and flashings to deflect liquid water to the main drainage plain and ultimately to the exterior of the building.
- Proper sequencing is critical. Protect rough openings with VaproLiqui-Flash System prior to installing WrapShield RS Rain Screen. Refer to VaproShield.com/details for further information.
- Use stainless steel (SS) staples in the top 2” above the horizontal integrated tape to affix material to sheathing substrate.
- Inside and outside corners should be wrapped continuously with field membrane or treated as a vertical joint.
- Maximum exposure prior to cladding installation is 6 months (180 days).

VERTICAL JOINTS - INSTALLATION

Do NOT overlap or double the drainage matrix in order to maintain a level plane for cladding installation.

Vertical Joint Installation

- Staple 11 3/4” VaproFlashing SA Self-Adhered (white side out) centered behind vertical joint location.
- Lap over lower course, half way onto tape joint [approx. 3.5”].
- Place butted joint of WrapShield RS at the middle of the VaproFlashing SA, Figure 1.
- Remove the release film from VaproFlashing SA, Figure 1.
- Note: VaproFlashing, mechanically attached may be used in lieu of VaproFlashing SA, with a 3/8” bead of VaproBond™ Adhesive Sealant, blind sealing behind each flap.
- Refer to p. 3 for illustrations and step-by-step instructions.

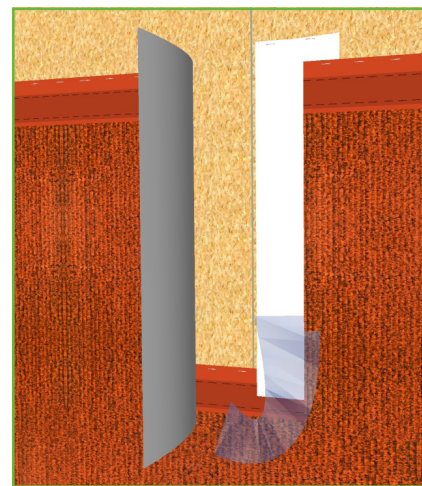


Figure 1.

SUBSTRATE INFORMATION

WrapShield RS Rain Screen can be installed over multiple substrates including: Plywood, OSB and Rigid Insulation.

NOTE: For Exterior Gypsum Sheathing or Concrete Substrates, VaproShield recommends installing WrapShield SA Self-Adhered and adding VaproMat™ 3mm or 7mm depth. Please see our WrapShield SA Self-Adhered Installation Instructions and our VaproMat™ data sheet at VaproShield.com .

WrapShield RS Rain Screen is not recommended for open joint rain screen applications. Refer to VaproShield.com for appropriate open joint membranes.

WrapShield RS Rain Screen can be installed over wet substrates to limit further water intrusion and to allow the substrate to dry during the construction period, provided the following procedures are implemented:

- The roof of the structure must be completely dried-in by either temporary measures or permanent installation, in order to prevent water intrusion throughout the remainder of construction.
- Window and door rough openings should be protected against water intrusion by temporary or permanent measures throughout the remainder of construction.
- Proper means and methods of drying the entire structure sufficiently prior to closing up the building enclosure is the responsibility of the General Contractor.

FASTENING GUIDELINES FOR PLYWOOD AND OSB SUBSTRATES:

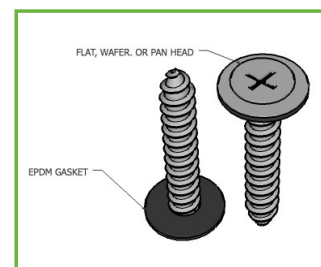
Use stainless steel staples **ONLY** in the top 2" **above** the horizontal integrated tape to adhere material to sheathing substrate. This area will be covered by the next course of WrapShield RS Rain Screen material.

Exposed fasteners should be avoided, if needed, use gasketed nails or gasketed wafer head screws as shown below. Do not use VaproCaps.

Cladding attachment components are to be considered as part of the permanent overall attachment requirements.

Quantity and placement of recommended fasteners will vary depending on the following factors and are the responsibility of the installer:

- Length of time the installed WrapShield RS membrane will be exposed prior to cladding material installation
- Spacing between the cladding attachments (i.e. 16", 24", 32" o.c., etc.)
- Type and material chosen for exterior cladding
- Local weather conditions, taking forecasted wind events into consideration.

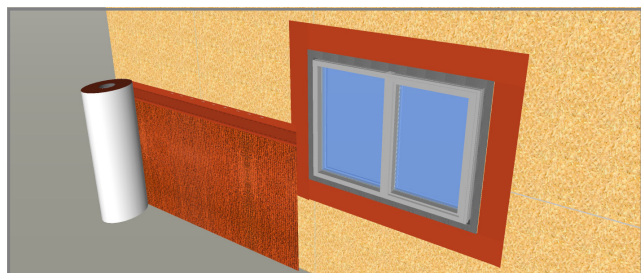


DO NOT place fasteners in the integrated tape overlap area **PRIOR** to removing the release papers and sealing. Fasteners placed in the tape area can tear the release paper during removal, resulting in a poor seal. Fasteners should be placed in the overlap area only after the release papers have been removed and the horizontal joint is sealed.

Contact VaproShield Technical Team if you have additional questions.

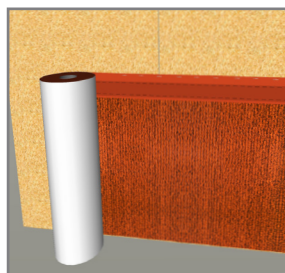
Page 2 of 4

Best Practice Installation Sequence for WrapShield RS Rain Screen

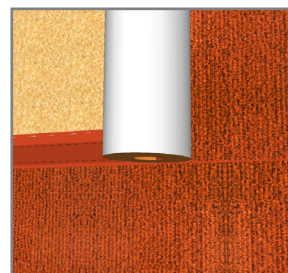


1. Flash all window and door rough openings with VaproLiqui-Flash and VaproFlashing prior to WrapShield RS Rain Screen field material installation. Refer to the following documents at www.VaproShield.com:

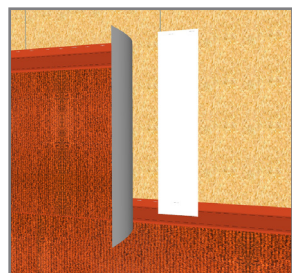
- VaproLiqui-Flash Installation Instructions and Details
- WrapShield RS Window to Wall Interface Detail



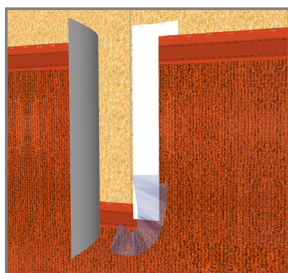
2. At the base of the wall, begin installation with SS staples in the top 2" above the tape. Snap a line for guidance. **Do not staple in the tape area.**



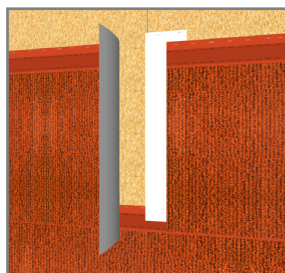
3. Line up the bottom of the upper course of material with the dotted line, creating a 6" overlap, progressing in a shingle fashion up the wall.



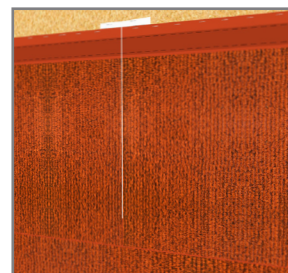
4. Staple 11 3/4" VaproFlashing SA Self-Adhered, centered behind vertical joint location, with white adhesive side out. Lap over lower course, halfway onto tape joint [approx. 3.5"], as shown. Place butted joint at middle of VaproFlashing SA Self-Adhered.



5. Remove release film of VaproFlashing SA Self-Adhered. Note: mechanically attached VaproFlashing may be used in lieu of VaproFlashing SA, with a 3/8" bead of VaproBond Adhesive Sealant, blind sealing behind each flap.



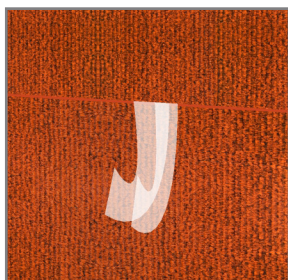
6. Install WrapShield RS abutting piece with joint centered on VaproFlashing SA. Use hand pressure to engage the pressure sensitive adhesive.



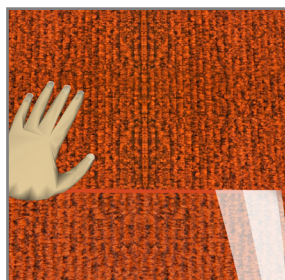
7. Lay original flap of WrapShield RS onto adhesive area of VaproFlashing SA to complete the joint. Place min. 2 staples in top 2" of each flap above tape line.



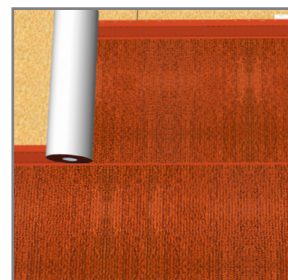
8. Carefully begin removing release film behind the horizontal lap, where the face of the lower and back of the upper course of material meet.



9. Line up both release papers together so they can be pulled down the wall with one hand.



10. Use the opposite hand to apply hand pressure, engaging the contact adhesive.



11. Secure material to substrate using only recommended gasketed fasteners in the field area of WrapShield RS, as previously noted in this document. Continue up the wall in shingle fashion. Repeat as needed.



VaproShield LLC 20-Year Product Warranty

Job #:
Purchase Date:
Installation Date:

Owner Name:
Address:
City/State/Zip:

Project Name:
Address:
City/State/Zip:

Installer Name
Address:
City/State/Zip:

PRODUCT:

Date Issued:

LIMITED PRODUCT WARRANTY AND DISCLAIMER*:

A) PRODUCTS TO WHICH WARRANTY APPLIES:

- 1). WALLSHIELD®
- 2). WRAPSHIELD®
- 3). WRAPSHIELD SA® SELF-ADHERED
- 4). WRAPSHIELD RS™
- 5). REVEALSHIELD™
- 6). REVEALSHIELD SA™ SELF-ADHERED
- 7). SLOPESHIELD®
- 8). SLOPESHIELD SA® SELF-ADHERED
- 9). VAPROMAT™
- 10). VAPROFLASHING™
- 11). VAPROFLASHING SA™
- 12). REVEALFLASHING™
- 13). REVEALFLASHING SA™ SELF-ADHERED
- 14). VAPROFLASHING Factory Formed Corners™
- 15). VAPROLIQUI-FLASH™
- 16). VAPROBOND™

B) LIMITED WARRANTY:

The WallShield, WrapShield, WrapShield SA, WrapShield RS, RevealShield, RevealShield SA, SlopeShield, SlopeShield SA and VAPROMAT products are suited for their intended use as an underlayment, weather resistive barrier, or as an air barrier. VaproShield will warrant its products for a period of twenty (20) years from the date of purchase.

VaproShield will replace any faulty product, provided the product used is installed per the published installation instructions and details. VaproShield installation instructions are provided with the products and/or are available at www.vaproshield.com, or by calling VaproShield toll free at 1-866-731-7663.

This warranty is transferable upon sale of the project, but in no event does it extend beyond 20 years from the date of original purchase of the product. Any and all claims must be made in writing within 20 business days after the owner discovers or obtains knowledge of any

defect in the product(s). VaproShield must be given reasonable opportunity to inspect the allegedly defective product and all damage prior to alteration or removal of the product or any surrounding building components.

All claims must be made in accordance with the claims and inspection procedure noted herein.

This warranty shall not apply to, and VaproShield shall not be liable for, any damages arising in whole or in part from any one or more of the following:

- 1) WallShield, WrapShield, WrapShield SA, WrapShield RS, RevealShield, RevealShield SA, SlopeShield, SlopeShield SA and VAPROMAT that is not stored or installed in accordance with VaproShield's installation instructions in effect at the time of the installation.
- 2) Improper building practices or design not in accordance with the applicable building code or industry standards, or any deviation from approved construction plans or specifications.
- 3) Damage to WallShield, WrapShield, WrapShield SA, WrapShield RS, RevealShield, RevealShield SA, SlopeShield, SlopeShield SA and VAPROMAT resulting from causes other than normal weather conditions, including impact of falling objects, "Acts of God," earthquakes, hurricanes, flood, fire, hailstorms, high winds, cascading roof/floor water, ponding water, immersion in water, or improper installation of any building component.
- 4) Defects in the structure or a component of the structure (e.g., window, door, or wall system), premature deterioration of the building materials, or non-standard use of the VaproShield products.

- 5). Contamination of membrane with building site chemicals including, but not limited to, surfactants or substances that adversely affects its water resistance.

OPEN JOINT APPLICATIONS:

VaproShield will warrant material for any open jointed cladding systems when VaproShield's Best Practices, details, and installation instructions (in effect at the time of the installation) are followed.

C) DISCLAIMER:

This warranty is limited to product replacement. This warranty is the sole warranty and is being provided in lieu of any other warranties, whether express or implied. Neither VaproShield LLC nor any of its affiliated companies, including product manufacturers, suppliers, representatives or distributors shall be liable for labor costs, consequential damages (such as personal injuries or damage to property) of any kind, loss of profits, loss of use, or any other damage or injury, whether known or unknown, that is caused or alleged to have been caused in whole or in part by any VaproShield product.

Any deviation from VaproShield's published Best Practices, details, and installation instructions (in effect at the time of the installation) shall void this warranty as to the entire project, unless such deviation was pursuant to a written directive or approval by VaproShield's Technical Team. Under no circumstances is a product sales representative, or any other individual or entity, authorized by VaproShield to direct or approve any VaproShield product installation, including but not limited to any deviation from VaproShield's published Best Practices, details, and installation instructions.

This Warranty is not valid unless and until VaproShield product has been paid for in full.