

**WallShield IT Integrated Tape** is a primary, water resistive, vapor permeable, air permeable, mechanically attached sheet membrane for rain screen building enclosures.

- No Primers Required
- All Weather Installation
- Zero VOC's
- Exceptionally High Drying Capacity

## Superior Building Envelope Protection

- Cutting-edge drying capacity (permeability, 142 perms) reduces risk of long-term damage from moisture infiltration, mold, mildew and rot
- Install on wet sheathings allowing saturated substrates to dry-out
- Resists bulk water infiltration

## Horizontal Integrated Tape and Cost Effectiveness

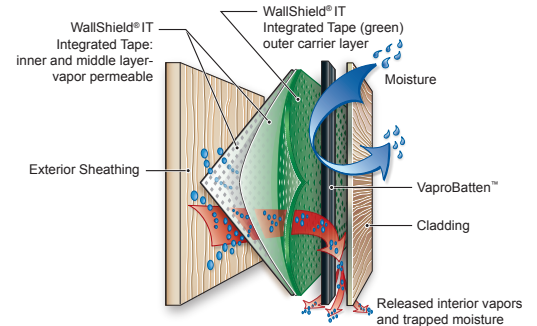
- Reduce installation time, lower material expenses and limit tape failures with integrated tape at the horizontal seams
- Increase accuracy of required 6" shingled overlap, ensuring water tight joinery, by lining upper membrane to lower membrane with pre-marked lap template
- Installs quickly and easily, mechanically attaching with VaproCaps to plywood, OSB and gypsum sheathing, rigid insulation, concrete block and pour-in-place concrete
- Reduces contractor liability by using fully tested VaproShield system: single source membranes, flashings and sealants
- Long-term durability with standard 20 year material warranty

## Phase Construction Friendly

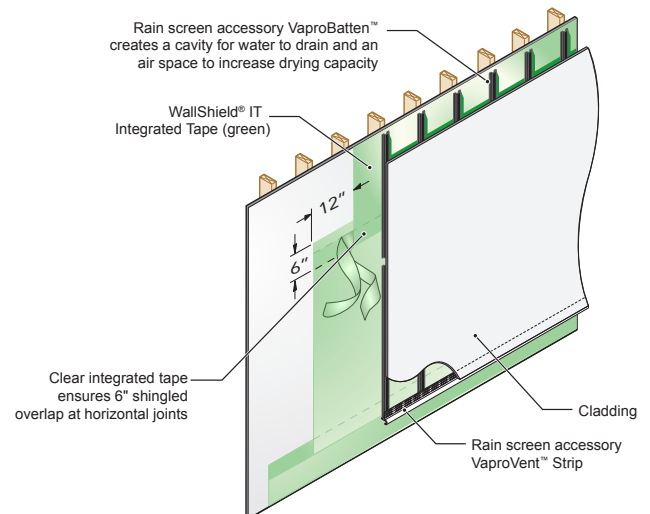
- Install in all climates and weather conditions
- No special installation equipment required, use common hand tools
- Tear, rip and puncture resistant during and after construction reducing repairs
- Sustains six (6) months of UV and climate exposure

## Environmental Sustainability

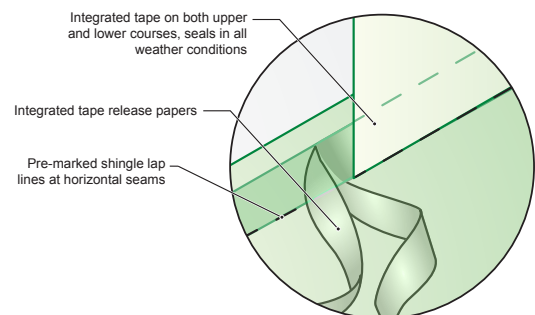
- Contributes to LEED points in Indoor Environmental Quality and Energy & Atmosphere
- Is 100% recyclable



**WallShield IT Integrated Tape Water Resistive Vapor Permeable Membrane construction**

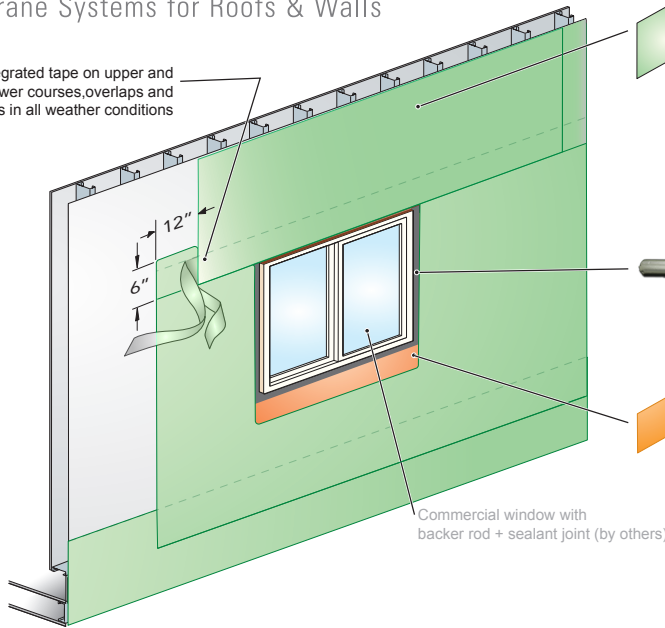


**WallShield IT Integrated Tape WRB is now enhanced with integrated horizontal tape, easily creating the shingled effect for optimum water tight horizontal joinery.**



**Clear Integrated Tape ensures 6" horizontal laps and can be sealed in all weather conditions.**

Integrated tape on upper and lower courses, overlaps and seals in all weather conditions



WallShield IT Integrated-Tape field membrane shingled over head flashing

Apply VaproLiqui-Flash inside rough opening + 1" on face

VaproFlashing pre-cut into rolls help to save labor and reduce waste.  
Shingled VaproFlashing; applied directly to sheathing, folded 2.75" inside of rough opening

Commercial window with backer rod + sealant joint (by others)

### ROUGH OPENING FLASHING

Fast and efficient rough opening flashing uses VaproShield accessories specifically designed and tested to work together, making field training and installation easy.

PROPERTY	STANDARD/TEST	RESULT
Tensile Strength	ASTM D882	MD 31.1 lbf/in (5.44 N mm) CD 29.8 lbf/in (5.22 N mm)
Water Resistance	AATC - 127	<b>PASS</b> (22 inch head of water – 5 hours)
Water Vapor Transmission	ASTM E398 as per ASTM E96* (Water Method)	142.46 Perms 986.62 g/m²•24 hrs
Breaking Force	ASTM D5034	MD 103 lbf (458 N) CD 108 lbf (480 N)
Low Temp Flexibility	AC38, Section 3.3.4	<b>PASS</b>
Weathering	AC38, Section 4.1	<b>PASS</b>
PROPERTY	STANDARD/TEST	RESULT
FIRE TESTING		
Flamespread Index	ASTM E84	0 - Class A
Smoke Developed Index	ASTM E84	65 – Class A
Assembly Fire Test	NFPA 285	Contact VaproShield Technical Team 1-866-731-7663 opt.5

\*ASTM E96 - Method B (wet cup method) typically gives a more realistic result for permeance than does the Method A (dry cut/desiccant) method.



### WallShield IT Integrated Tape

- Easily create the necessary shingle effect
- Integrated tape seals horizontal seams in all weather conditions
- Ensure firm adhesion with weighted J-roller

Visit [VaproShield.com](http://VaproShield.com) for:



Comprehensive Testing Data



Installation Instructions



Details