

## OVERVIEW

WallShield® IT Integrated Tape is a mechanically attached high performance Water Resistive Barrier (WRB) material designed for above grade use in drainage cavity walls. WallShield IT is recommended for applications requiring a high level of vapor permeability through the building enclosure. WallShield IT provides outstanding liquid water holdout capabilities as a Water Resistive Barrier (WRB) and with the option to use the Integrated Tape located at the horizontal overlaps makes it easier than ever to limit moisture infiltration with a mechanically attached membrane, even in extreme weather locations.

## BEST PRACTICES

- Install WallShield IT with approved fasteners in a horizontal, shingle fashion.
- Plan prior to installation to minimize waste and ensure all interfaces and penetrations are identified and detailed correctly to protect against water infiltration.
- Horizontal overlaps must be at 6" to properly seal (optional) the Integrated Tape joint.
- Vertical overlaps are to be 12" minimum (optional: recommended for extreme weather locations, seal with VaproLiqui-Flash or VaproBond™ Adhesive Sealant).
- Vertical overlaps are to be staggered a minimum of 24" and should not occur directly above or below windows or doors.
- Inside and outside corners can be continuous, or if a vertical joint occurs within 24" horizontally, an overlap of 12" minimum in both directions is required, providing a double layer at the corner.
- Cladding attachment components are to be counted in the overall attachment requirements.
- WallShield IT must be correctly shingled with all openings, penetrations and flashings to deflect liquid water to the main drainage plain and ultimately to the exterior of the building.
- Always install WallShield IT in a "weatherboard or shingle fashion" with the upper courses lapped on top of the courses below, use the dotted line provided at 6" below the top edge.
- Sustains six (6) months (180) days UV and climate exposure prior to cladding installation.

## SUBSTRATE INFORMATION

WallShield IT can be installed over multiple substrates including: plywood, OSB, framing lumber, gypsum sheathing, rigid insulation, and semi-rigid insulation (mineral fiber).

WallShield IT can be installed over wet substrates to limit further water intrusion and to allow the substrate to dry during the construction period provided the following procedures are implemented:

1. The roof of the structure must be completely dried-in by either temporary measures or permanent installation, in order to prevent water intrusion throughout the remainder of construction.
2. Window and door rough openings should be protected against water intrusion by temporary or permanent measures throughout the remainder of construction.
3. Proper means and methods of drying the entire structure sufficiently prior to closing up the building enclosure are the responsibility of the General Contractor.

## **FASTENING GUIDELINES**

WallShield IT is mechanically fastened to the substrate. Stainless steel staples or cap nails may be used as temporary fasteners during installation but only at locations that will be covered by the shingling of the next layer of material. See the sequential installation details on page 3.

DO NOT place fasteners in the Integrated Tape overlap area prior to removing the release films and sealing the Integrated Tape seam. Fasteners placed in the tape area can tear the release film during removal, resulting in a poor seal. Place fasteners in the overlap area after the Integrated Tape release films are removed and the horizontal joint is sealed.

Exposed fasteners for the WallShield IT will require VaproCaps and #6,#7, or #8 size corrosion resistant bugle headed screws of the appropriate thread design and length for the underlying substrate and framing material.

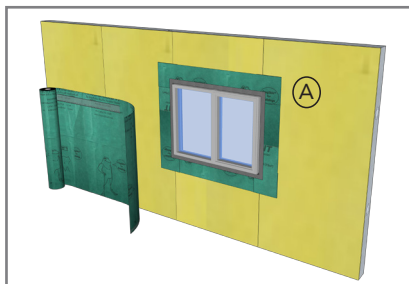
VaproCaps are washers that have been extensively tested for water leakage. Substitutions are not recommended.

Cladding attachments that penetrate the WRB should be factored into the overall fastening quantity and placement.

Quantity and placement of fasteners will vary depending on the following variables:

- Length of time the installed WallShield IT WRB will be exposed prior to cladding attachments installation such as: furring strips, battens, hat channels, masonry ties, metal extrusions, etc.
- Spacing between the cladding attachments (i.e. 16", 24", 32" o.c., etc.)
- Type and material chosen for exterior cladding
- Local weather conditions
- Plywood and OSB sheathing applications: Use coarse threaded bugle head design wood screws in the above mentioned sizes, install with VaproCaps only in the sheathing, without contacting the underlying framing members.
- Gypsum Sheathing and Metal Framing: Use self-drilling fine threaded screws in the above mentioned sizes and shape with VaproCaps installed into the underlying metal framing or strapping.
- Fasteners for VaproBattens, furring strips, cladding clips, hat channels, etc. should be evaluated for liquid water holdout properties before selection or installation. Gasketed fasteners are recommended whenever possible. Contact VaproShield Technical Support for additional information on fasteners.

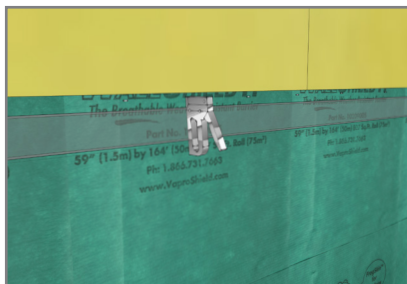
**BEST PRACTICE INSTALLATION SEQUENCE FOR WRAPSHIELD IT STEPS 1-10**



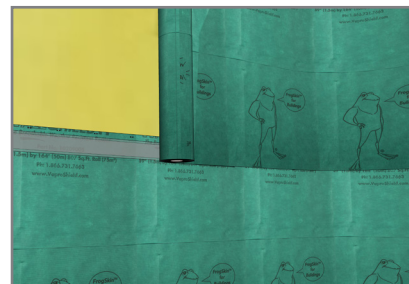
1. After flashing the window's rough opening, begin installation at the base of the wall, progressing in a shingle fashion upwards.

Snap a level chalk line for guidance.

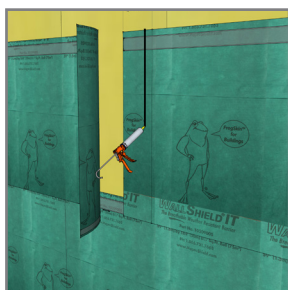
(A) See VaproShield.com for window options and flashing installation guide.



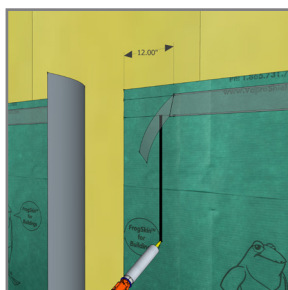
2. Install with SS staples in the top 2" above the Integrated Tape. Avoid stapling in the adhesive strip area of the Integrated Tape.



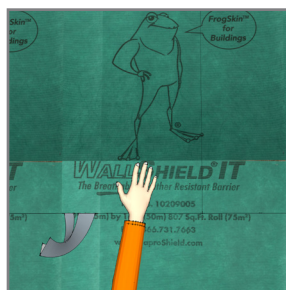
3. Line up the bottom of the upper course of material with the dotted line, creating a 6" overlap.



4. Overlap vertical seams by 12" minimum, seal with VaproLiqui-Flash or VaproBond Adhesive Sealant if necessary.



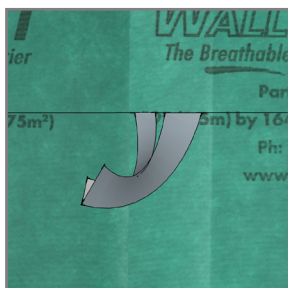
5. Remove release film from top of adhesive strip where flap overlaps.



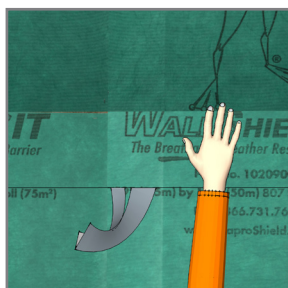
6. Lay overlapping layer of WallShield IT onto vertical sealant joint and smooth with hand pressure.



7. Optional for extreme exposure locations: Join horizontal seams by peeling back both release films, starting from where horizontal joint meets vertical joint.



8. Optional for extreme exposure locations: Line up both release films together so they can be pulled down the wall with one hand.



9. Optional for extreme exposure locations: Use the opposite hand to smooth the two layers together as the release film is removed.



10. Optional for extreme exposure locations: Smooth out wrinkles with hand pressure and seal the adhesive strips using a hand roller.

## VaproShield LLC 20-Year Product Warranty

**Job #:**  
**Purchase Date:**  
**Installation Date:**

**Owner Name:**  
**Address:**  
**City/State/Zip:**

**Project Name:**  
**Address:**  
**City/State/Zip:**  
**PRODUCT:**

**Installer Name:**  
**Address:**  
**City/State/Zip:**  
**Date Issued:**

### LIMITED PRODUCT WARRANTY AND DISCLAIMER\*:

#### A) PRODUCTS TO WHICH WARRANTY APPLIES:

- 1). WALLSHIELD®
- 2). WRAPSHIELD®
- 3). WRAPSHIELD SA® SELF-ADHERED
- 4). WRAPSHIELD RS™
- 5). REVEALSHIELD™
- 6). REVEALSHIELD SA™ SELF-ADHERED
- 7). SLOPESHIELD®
- 8). SLOPESHIELD SA® SELF-ADHERED
- 9). VAPROMAT™
- 10). VAPROFLASHING™
- 11). VAPROFLASHING SA™
- 12). REVEALFLASHING™
- 13). REVEALFLASHING SA™ SELF-ADHERED
- 14). VAPROFLASHING Factory Formed Corners™
- 15). VAPROLIQUID-FLASH™
- 16). VAPROBOND™

#### B) LIMITED WARRANTY:

The WallShield, WrapShield, WrapShield SA, WrapShield RS, RevealShield, RevealShield SA, SlopeShield, SlopeShield SA and VAPROMAT products are suited for their intended use as an underlayment, weather resistive barrier, or as an air barrier. VaproShield will warrant its products for a period of twenty (20) years from the date of purchase.

VaproShield will replace any faulty product, provided the product used is installed per the published installation instructions and details. VaproShield installation instructions are provided with the products and/or are available at [www.vaproshield.com](http://www.vaproshield.com), or by calling VaproShield toll free at 1-866-731-7663.

This warranty is transferable upon sale of the project, but in no event does it extend beyond 20 years from the date of original purchase of the product. Any and all claims must be made in writing within 20 business days after the owner discovers or obtains knowledge of any

defect in the product(s). VaproShield must be given reasonable opportunity to inspect the allegedly defective product and all damage prior to alteration or removal of the product or any surrounding building components.

**All claims must be made in accordance with the claims and inspection procedure noted herein.**

This warranty shall not apply to, and VaproShield shall not be liable for, any damages arising in whole or in part from any one or more of the following:

- 1) WallShield, WrapShield, WrapShield SA, WrapShield RS, RevealShield, RevealShield SA, SlopeShield, SlopeShield SA and VAPROMAT that is not stored or installed in accordance with VaproShield's installation instructions in effect at the time of the installation.
- 2) Improper building practices or design not in accordance with the applicable building code or industry standards, or any deviation from approved construction plans or specifications.
- 3) Damage to WallShield, WrapShield, WrapShield SA, WrapShield RS, RevealShield, RevealShield SA, SlopeShield, SlopeShield SA and VAPROMAT resulting from causes other than normal weather conditions, including impact of falling objects, "Acts of God," earthquakes, hurricanes, flood, fire, hailstorms, high winds, cascading roof/floor water, ponding water, immersion in water, or improper installation of any building component.
- 4) Defects in the structure or a component of the structure (e.g., window, door, or wall system), premature deterioration of the building materials, or non-standard use of the VaproShield products.

5). Contamination of membrane with building site chemicals including, but not limited to, surfactants or substances that adversely affects its water resistance.

#### OPEN JOINT APPLICATIONS:

VaproShield will warrant material for any open jointed cladding systems when VaproShield's Best Practices, details, and installation instructions (in effect at the time of the installation) are followed.

#### C) DISCLAIMER:

**This warranty is limited to product replacement. This warranty is the sole warranty and is being provided in lieu of any other warranties, whether express or implied. Neither VaproShield LLC nor any of its affiliated companies, including product manufacturers, suppliers, representatives or distributors shall be liable for labor costs, consequential damages (such as personal injuries or damage to property) of any kind, loss of profits, loss of use, or any other damage or injury, whether known or unknown, that is caused or alleged to have been caused in whole or in part by any VaproShield product.**

**Any deviation from VaproShield's published Best Practices, details, and installation instructions (in effect at the time of the installation) shall void this warranty as to the entire project, unless such deviation was pursuant to a written directive or approval by VaproShield's Technical Team. Under no circumstances is a product sales representative, or any other individual or entity, authorized by VaproShield to direct or approve any VaproShield product installation, including but not limited to any deviation from VaproShield's published Best Practices, details, and installation instructions.**

This Warranty is not valid unless and until VaproShield product has been paid for in full.