

OVERVIEW

RevealShield IT Intergrated Tape is a high performance, mechanically attached Weather Resistive Barrier (WRB) and Air Barrier (AB) material specifically designed for open joint cladding systems where the reveals between cladding panels or boards are exposed to UV light. The black UV stable coating provides long term performance against UV degradation while protecting the walls from liquid water intrusion.

Recommended for applications requiring a high level of vapor permeability, RevealShield IT Intergrated Tape provides the protection necessary behind an open joint rain screen design. The intergrated tape located at the horizontal overlaps makes it easier than ever to limit air infiltration with a mechanically attached membrane.

BEST PRACTICES

- Install RevealShield IT Intergrated Tape with approved fasteners in a horizontal, shingle fashion.
- Plan prior to installation to minimize waste and ensure all interfaces and penetrations are identified and detailed correctly to protect against water and air infiltration.
- Horizontal overlaps must be at 6" to properly seal the Intergrated Tape joint.
- Vertical overlaps are to be 12" minimum and require VaproBond™ Adhesive Sealant, to provide an air barrier seal. Vertical overlaps are to be staggered a minimum of 24" and should not occur directly above or below windows or doors.
- Inside and outside corners can be continuous, or if a vertical joint occurs within 24" horizontally, an overlap of 12" minimum in both directions is required, providing a double layer at the corner.
- Cladding attachment components are to be counted in the overall attachment requirements.
- RevealShield IT Intergrated Tape must be correctly shingled with all openings, penetrations and flashings to deflect liquid water to the main drainage plain and ultimately to the exterior of the building.
- Always install RevealShield IT Intergrated Tape in a "*shingle fashion*" with the upper courses lapped on top of the courses below, use the dotted line provided at 6" below the top edge.
- Immediately roll the intergrated tape horizontal seams with floor roller to ensure full contact to prevent moisture and air infiltration.
- Sustains six (6) months (180) days UV and climate exposure prior to cladding installation.

SUBSTRATE INFORMATION

RevealShield IT Intergrated Tape can be installed over multiple substrates including: plywood, OSB, framing lumber, gypsum sheathing, rigid insulation, and semi-rigid insulation (mineral fiber).

RevealShield IT Intergrated Tape can be installed over wet substrates to limit further water intrusion and to allow the substrate to dry during the construction period provided the following procedures are implemented:

1. *The roof of the structure must be completely dried-in by either temporary measures or permanent installation, in order to prevent water intrusion throughout the remainder of construction.*
2. *Window and door rough openings should be protected against water intrusion by temporary or permanent measures throughout the remainder of construction.*
3. *Proper means and methods of drying the entire structure sufficiently prior to closing up the building enclosure are the responsibility of the General Contractor.*

REQUIREMENTS FOR ALL OPEN JOINT SYSTEMS

Open joint cladding systems will allow liquid water to contact the secondary protective layer of the WRB/AB anytime there is a rain event. High quality workmanship by the installers of the WRB/AB is absolutely necessary. Fastener penetrations that do not provide an adequate water and air tight seal alone will require additional measures such as sealant or self-sealing tapes at these locations. Please consult the VaproShield Technical Dept. for recommendations.

- All windows, doors and other penetration flashings need to be installed in shingle fashion to direct water to the exterior.
- Maximum open joint size between cladding components is up to 2" horizontal and 1/2" vertical open joints.
- Maximum percentage of WRB/AB open area allowed is 40% of total wall area.
- Ensure a minimum 1/2" inch deep rain screen drainage cavity system is incorporated in all RevealShield WRB/AB installations.

FASTENING GUIDELINES

RevealShield IT Intergrated Tape is mechanically fastened to the substrate. Stainless steel staples or cap nails may be used as temporary fasteners during installation but only at locations that will be covered by the shingling of the next layer of material. See the sequential installation details on page 3.

DO NOT place fasteners in the Intergrated Tape overlap area prior to removing release film and sealing Intergrated Tape seam. Fasteners placed in the tape area can tear the release film during removal, resulting in a poor seal. Place fasteners in the overlap area **after** the Intergrated Tape release film is removed and the horizontal joint is sealed.

Exposed fasteners for the RevealShield IT Intergrated Tape WRB/AB will require VaproCaps and #6,#7, or #8 size corrosion resistant bugle headed screws of the appropriate thread design and length for the underlying substrate and framing material.

VaproCaps™ are washers that have been extensively tested for both water and air leakage. Substitutions are not recommended.

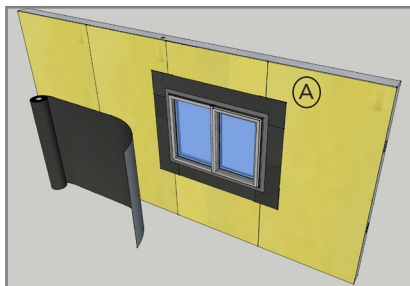
Cladding attachments that penetrate the WRB/AB should be factored into the overall fastening quantity and placement. Quantity and placement of fasteners will vary depending on the following variables:

- Length of time the installed RevealShield IT Intergrated Tape WRB/AB will be exposed prior to cladding attachments installation such as: furring strips, battens, hat channels, masonry ties, metal extrusions, etc.
- Spacing between the cladding attachments (i.e. 16", 24", 32" o.c., etc.)
- Type and material chosen for exterior cladding
- Local weather conditions
- Plywood and OSB sheathing applications: Use coarse threaded bugle head design wood screws in the above mentioned sizes, install with VaproCaps only in the sheathing, without contacting the underlying framing members.

Gypsum Sheathing and Metal Framing: Use self-drilling fine threaded screws in the above mentioned sizes and shape with VaproCaps installed into the underlying metal framing or strapping.

Fasteners for VaproBattens™, furring strips, cladding clips, hat channels, etc. should be evaluated for liquid water holdout properties before selection or installation. Gasketed fasteners are recommended whenever possible.

BEST PRACTICE INSTALLATION SEQUENCE FOR REVEALSHIELD IT INTERGRATED TAPE STEPS 1-11



1. Begin installation at the base of the wall, progressing in a shingle fashion upwards.

Snap a level chalk line for guidance.

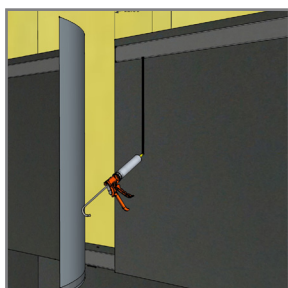
(A) See VaproShield.com for window options and flashing installation guide.



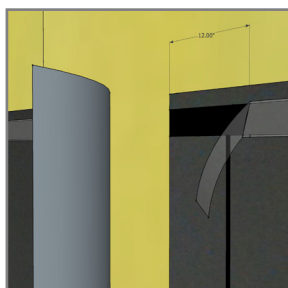
2. Install with SS staples in the top 2" above the Intergrated Tape. Avoid stapling in the tape area.



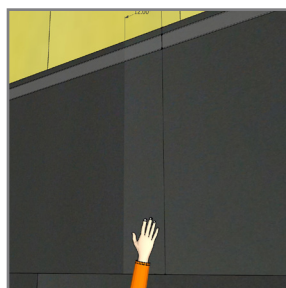
3. Line up the bottom of the upper course of material with the dotted line, creating a 6" overlap.



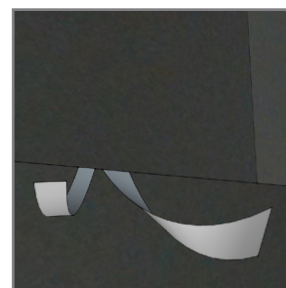
4. Overlap vertical seams by 12" minimum, seal with VaproBond Adhesive Sealant.



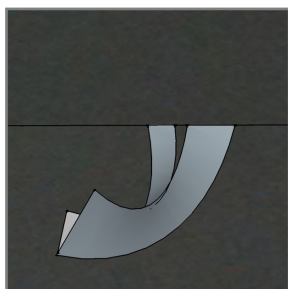
5. Remove release film from top of tape where flap overlaps.



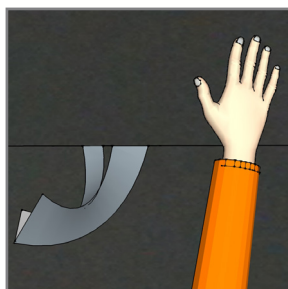
6. Lay overlapping layer of RevealShield onto vertical sealant joint and smooth with hand pressure.



7. Join horizontal seams by peeling back both release films, starting from where horizontal joint meets vertical joint.



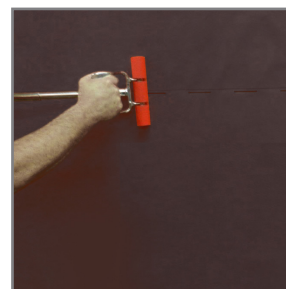
8. Line up both release films together so they can be pulled down the wall with one hand.



9. Use the opposite hand to smooth the two layers together as the release film is removed.



10. Smooth out wrinkles with hand pressure.



11. Immediately roll the intergrated tape horizontal seams with floor roller to ensure full contact.



Call VaproShield Technical Department, 1.866.731.7663 for further clarification.



VaproShield LLC 20-Year Product Warranty

Job #:
Purchase Date:
Installation Date:

Project Name:
Address:
City/State/Zip:

PRODUCT:

Owner Name:
Address:
City/State/Zip:

Installer Name
Address:
City/State/Zip:

Date Issued:

LIMITED PRODUCT WARRANTY AND DISCLAIMER*:

A) PRODUCTS TO WHICH WARRANTY APPLIES:

- 1). WALLSHIELD®
- 2). WRAPSHIELD®
- 3). WRAPSHIELD SA® SELF-ADHERED
- 4). WRAPSHIELD RS™
- 5). REVEALSHIELD™
- 6). REVEALSHIELD SA™ SELF-ADHERED
- 7). SLOPESHIELD®
- 8). SLOPESHIELD SA® SELF-ADHERED
- 9). VAPROFLASHING™
- 10). VAPROFLASHING SA™
- 11). RevealFlashing™
- 12). RevealFlashing SA™ SELF-ADHERED
- 13). FACTORY FORMED CORNERS™

B) LIMITED WARRANTY:

The WallShield, WrapShield, WrapShield SA, WrapShield RS, RevealShield, RevealShield SA, SlopeShield and SlopeShield SA products are suited for their intended use as an underlayment, weather resistive barrier, or as an air barrier. VaproShield will warrant its products for a period of twenty (20) years from the date of purchase. VaproShield will replace any faulty product, provided the product used is installed per the published installation instructions and details. VaproShield installation instructions are provided with the products and/or are available at www.vaproshield.com, or by calling VaproShield toll free at 1-866-731-7663.

This warranty is transferable upon sale of the project, but in no event does it extend beyond 20 years from the date of original purchase of the product. Any and all claims must be made in writing within 20 business days after the owner discovers or obtains knowledge of any defect in the product(s). VaproShield must be given reasonable opportunity to inspect the

allegedly defective product and all damage prior to alteration or removal of the product or any surrounding building components.

All claims must be made in accordance with the claims and inspection procedure noted herein.

This warranty shall not apply to, and VaproShield shall not be liable for, any damages arising in whole or in part from any one or more of the following:

- 1) WallShield, WrapShield, WrapShield SA, WrapShield RS, RevealShield, RevealShield SA, SlopeShield and SlopeShield SA that is not stored or installed in accordance with VaproShield's installation instructions in effect at the time of the installation.
- 2) Improper building practices or design not in accordance with the applicable building code or industry standards, or any deviation from approved construction plans or specifications.
- 3) Damage to WallShield, WrapShield, WrapShield SA, WrapShield RS, RevealShield, RevealShield SA, SlopeShield and SlopeShield SA resulting from causes other than normal weather conditions, including impact of falling objects, "Acts of God," earthquakes, hurricanes, flood, fire, hailstorms, high winds, cascading roof/floor water, ponding water, immersion in water, or improper installation of any building component.
- 4) Defects in the structure or a component of the structure (e.g., window, door, or wall system), premature deterioration of the building

materials, or non-standard use of the VaproShield products.

- 5). Contamination of membrane with building site chemicals including, but not limited to, surfactants or substances that adversely affects its water resistance.

OPEN JOINT APPLICATIONS:

VaproShield will warrant material for any open jointed cladding systems when VaproShield's Best Practices, details, and installation instructions (in effect at the time of the installation) are followed.

C) DISCLAIMER:

This warranty is limited to product replacement. This warranty is the sole warranty and is being provided in lieu of any other warranties, whether express or implied. Neither VaproShield LLC nor any of its affiliated companies, including product manufacturers, suppliers, representatives or distributors shall be liable for labor costs, consequential damages (such as personal injuries or damage to property) of any kind, loss of profits, loss of use, or any other damage or injury, whether known or unknown, that is caused or alleged to have been caused in whole or in part by any VaproShield product.

This Warranty is not valid unless and until Vaproshield product has been paid for in full.